

0668-002

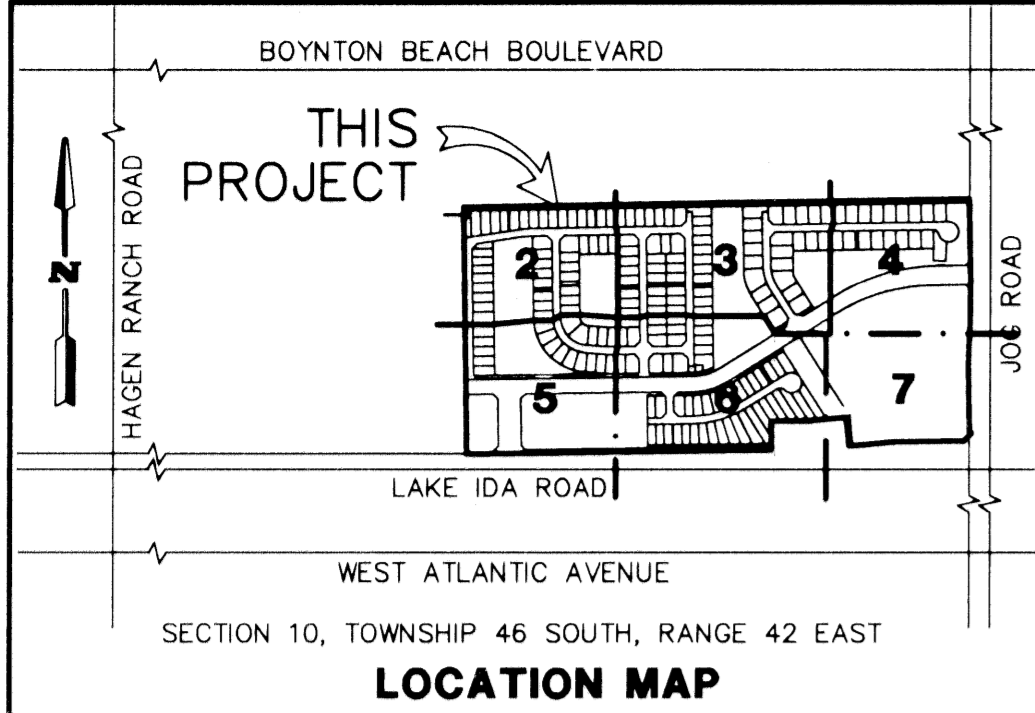
50

HUNTINGTON WALK PLAT NO. 1, A P.U.D.

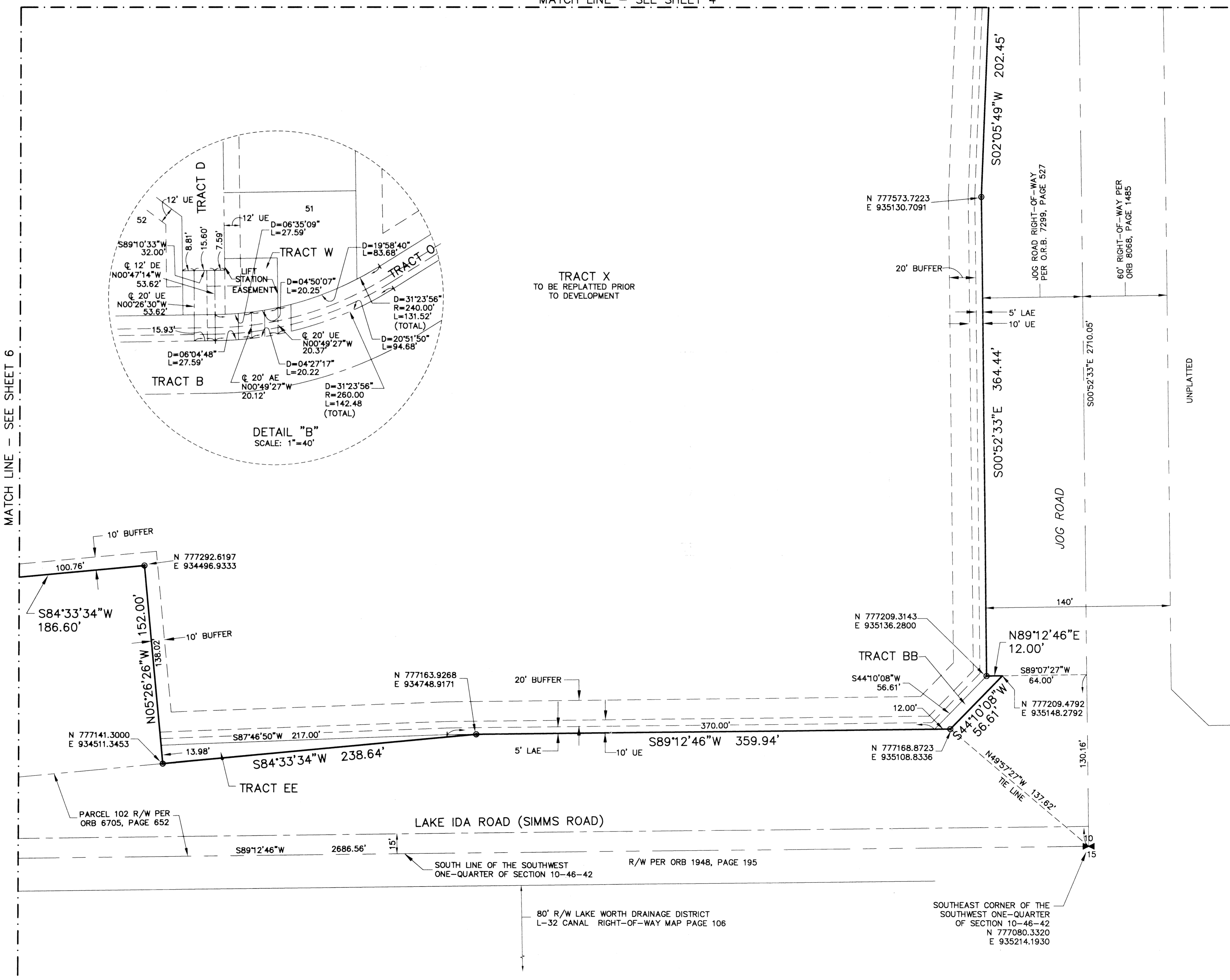
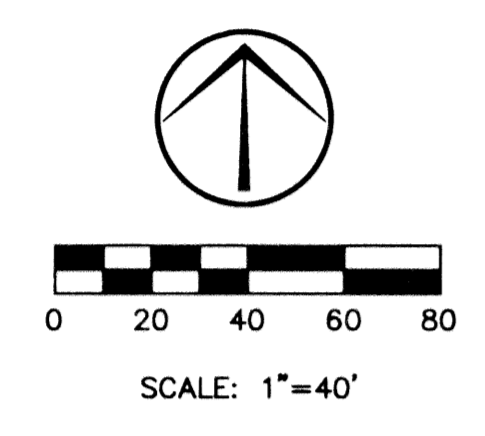
A PORTION OF THE SOUTH ONE-HALF OF THE SOUTHWEST ONE-QUARTER OF SECTION 10, TOWNSHIP 46 SOUTH, RANGE 42 EAST, PALM BEACH COUNTY, FLORIDA

THIS INSTRUMENT PREPARED BY JAMES E. PARK, P.L.S.
WILLIAMS, HATFIELD & STONER, INC. - ENGINEERS PLANNERS SURVEYORS
1901 SOUTH CONGRESS AVENUE, SUITE 150, BOYNTON BEACH, FLORIDA 33426

SHEET 7 OF 7



MATCH LINE - SEE SHEET 4



MATCH LINE - SEE SHEET 6

TAZ
965

Subdivision # Huntington Walk
Book 83 Page 50
Flood Map # 2007
Quad # 36
SE 95-59
ZIP CODE 33484
PUD NAME Huntington Walk